



WILLIAM JOHNSTON & COMPANY LIMITED



Glasgow Tel: +44 (0) 141 620 1666 | Inverness Tel: +44 (0) 1463 238 673
sales@williamjohnston.co.uk | www.williamjohnston.co.uk

YOUR OFFICIAL UK DISTRIBUTOR FOR LINK-SEAL

Link-Seal®...the world's standard for sealing pipe penetrations
passing through walls, floors and ceilings.



DESCRIPTION

Cell-Cast® Hole Forming Disks are designed to produce large diameter holes in poured concrete structures. They range in diameters from 29.25" (74.3cm) to 64.75" (164.5cm) and larger. All diameters are available in 3" (76.2mm) and 4" (101.6mm) widths to accommodate any form thickness from 3" (76.2mm) and above [except for 5" (127mm)].

Cell-Cast® Hole Forming Disks are easily installed by one construction worker due to their light weight. For example, one three inch thick by 50" diameter Cell-Cast® weighs just 22.0 pounds. So now you can install large hole forming disks without the use of cranes, hoists or other devices needed to assist in lifting heavier, more bulky components.

BENEFITS/FEATURES

Economy.

- Reduces material costs by 30% to 50%.
- Cuts labor costs by 50% to 70%.
- Minimizes freight and handling charges.

Quality

- Consistently produces dimensionally accurate openings.
- Sized to work with Link-Seal® Modular Seals.
- Avoids potential leak path between sleeve and concrete.

Installation

- Lightweight, 1/8 the weight of steel pipe sleeves.
- Complete assembly accomplished in minutes.
- Easily installed by one construction worker.

Availability

- Cell-Cast® Hole Forming Disks are stocked in a variety of diameters up to 64.75" (164cm) and available for immediate delivery.
- Larger sizes are available on special order.

Flexibility

- Cell-Cast® Hole Forming Disks are produced in 3" and 4" thicknesses and can be assembled to fit any wall except 5" thick.

For Example:

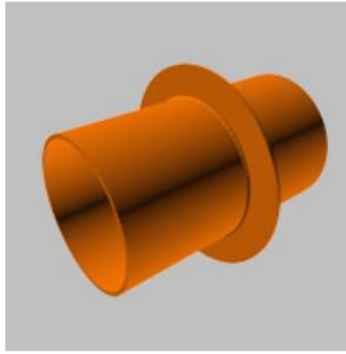
- Combine two 3" cells and one 4" cell for 10" walls.
- Combine two 4" cells and one 3" cell for 11" walls.
- Combine three 4" cells for 12" walls.

WEIGHTS AND DIMENSIONAL DATA

Cell-Cast® Hole Forming Disks - Model CC					
CELL-CAST® MODEL NO.	HOLE I.D.	3" THICKNESS		4" THICKNESS	
		LBS.	KG	LBS.	KG
CC-30	29.25	10.0	4.53	10.4	4.71
CC-32	31.13	10.8	4.89	11.2	5.08
CC-36	34.75	12.6	5.71	13.1	5.94
CC-38	37.25	13.9	6.30	14.4	6.53
CC-42	41.38	16.3	7.39	16.8	7.62
CC-44	43.75	17.7	8.02	18.3	8.30
CC-48	47.25	20.0	9.07	20.7	9.38
CC-50	50.00	22.0	9.97	22.6	10.25
CC-54	52.63	23.9	10.84	24.6	11.15
CC-56	56.00	26.5	12.02	27.3	12.38
CC-60	59.25	29.2	13.24	30.0	13.60
CC-64	62.75	32.2	14.60	33.1	15.01
CC-66	64.75	34.0	15.42	34.9	15.83

Weight Comparison

WS STEEL SLEEVE
WS-48-37-2-12 = **250 lbs.**



cell-Cast® Disks
CC-48-4(3) = **62 lbs.**



WARRANTY

All products are warranted against failure caused by manufacturing defects for a period of one year. Any product found to be so defective and returned within one year from date of shipment will be replaced without charge. The above warranty is made in lieu of, and we disclaim, any and all other warranties,

expressed or implied, including the warranties of merchantability and fitness for a particular purpose, and buyer agrees to accept the products without any such warranties. We hereby disclaim any obligation or liability for consequential damages, labor costs or any other claims or liabilities of any kind whatsoever.

Disclaimer

Please note, failure to select the correct materials or products we supply ("the Products") may result in damage to plant, equipment or property. In some instances, it may cause death or personal injury. We are not designers and do not give advice about design related matters concerning the Products. We can help and assist with the technical specifications for the Products. In specific applications, particularly where critical conditions exist, we will try to assist you within the limitations of the services that we offer. All information supplied by us is intended as technical co-operation outlining the specifications of the different Products which we supply. To the extent permitted in law, no warranty is given in respect of any information supplied by us. The customer must satisfy themselves as to the suitability of the Products for their intended application and use. The correct fitting of Products is the responsibility of the customer. Your statutory rights remain unaffected. Save in respect of death, personal injury or fraud, our entire liability to you, however arising from the supply of Products shall be limited to the £10M indemnity amount provided by our insurers.