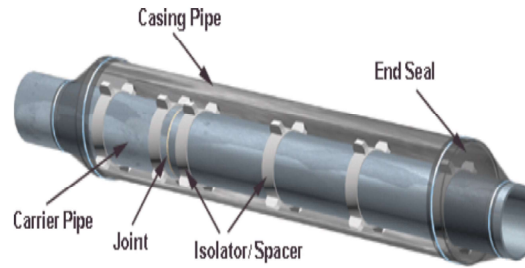


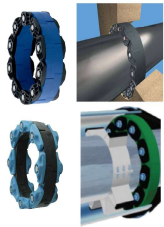
# LINK-SEAL



**WILLIAM JOHNSTON  
& COMPANY LIMITED**

Glasgow Tel: +44 (0) 141 620 1666 | Inverness Tel: +44 (0) 1463 238 673  
[sales@williamjohnston.co.uk](mailto:sales@williamjohnston.co.uk) | [www.williamjohnston.co.uk](http://www.williamjohnston.co.uk)

How do I seal a pipe passing through a wall?  
 How do I make sure the exterior pipe is rust protected?



5 Bar  
up to 6M diameter  
Steel Pipe  
Plastic pipe

Potable water  
Oil  
Fire Rated

What happens when I need to seal more than one pipe?  
 What do I do when the annular space is too small for a Link-seal?  
 What do I do when the carrier pipe is not central?



1.5 Bar  
Up to 3M diameter  
Steel pipe  
Plastic pipe

Oil  
Water  
Fire rated

Standard & Bespoke designs available

How do I seal a pipe that has radial or axial movement?  
 Can I get a completely bespoke size?  
 Are they fire rated?

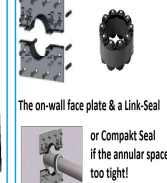


Do you have a gasket that will take care of mis-aligned flanges?

Can you go up to a 500mm Pipe?



How do I fix this?

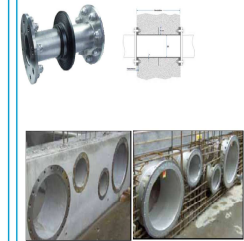


The on-wall face plate & a Link-Seal  
 or Compact Seal  
 if the annular space  
 is too tight!

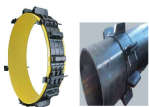
Do you have an instant fit seal for pipe or cable?  
 Do they absorb noise and vibration?  
 Are they fire rated?  
 Can they be installed vertically as well as horizontally?  
 Are they gas tight as well as water?  
 What about high temperature or chemicals?



Cast into a wall they are pressure tight, stainless assemblies with built in puddle flange. Lining flush with the wall they are ideal for water treatment plants, sewerage plants or anywhere you are tight for space.



How do I centralise the pipe?  
 How do I move and support large heavy pipe?



What do I use if I want to cast a wall round about a Link-seal or Compact Seal?  
 What type suits what pipe?



Can they be split if I can not move the pipe?

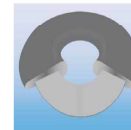


Do you have a compound that I can use to act as an adhesive?  
 Is it water and gas tight?  
 Is it anti-corrosion?

What happens during the winter when a pipe shrinks and starts to leak?



Do you have a rubber gasket that goes up to 40 Bar?  
 Is it WRAS approved?  
 Can you go up to a 2000mm Pipe?



How do I seal a corrugated pipe going through a wall?



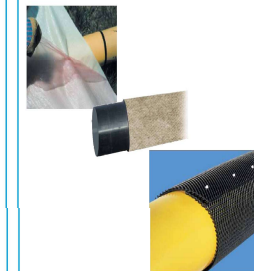
Do you seal for the end of pipes?  
 Are they available in different sizes?



Do you have anti-corrosion tapes?  
 Are they UV stable?  
 Are they long lasting?



Do you have various anti-abrasion products for pipe?



How can I reduce overall project cost?  
 How can I reduce leakage?  
 How can I reduce installation time?

